

# Eliminate Microsoft 365 Blindspots

Are you among the 43% of IT departments which have deployed Microsoft 365? If yes, you probably are enjoying the benefits of SaaS, but are concerned about mission-critical availability and performance. Netreo's "Microsoft 365 Insight" module gets you the visibility you need to drive organizational productivity.

## Observe

Synthetic email checks to and from Microsoft 365 mailboxes (or routed through on-prem Exchange servers) to validate the health of your organization's email infrastructure.

## Analyze

Get insight into IT spend for Microsoft 365. Track usage patterns and license consumption for Exchange Online, Sharepoint, OneDrive, Teams, Yammer, and Skype.

## Act

Based on the observations and analysis of data gathered, Powershell scripts can be executed against your Microsoft 365 tenant to remediate issues that may be detected.

## What is Microsoft 365 Insight?

Netreo's "Microsoft 365 Insight" module gives your IT organization complete visibility into the Microsoft productivity suite. Get response times to each of the services, execute synthetic checks against the services, and obtain views into Microsoft 365 license utilization.



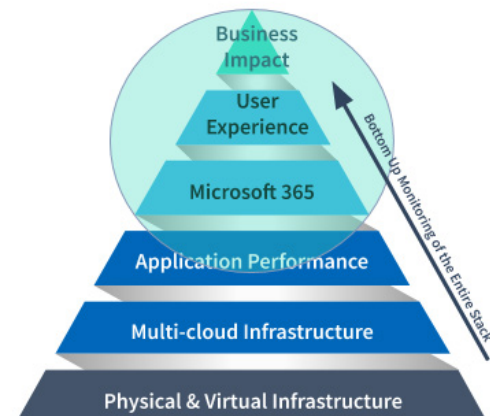
**Drive Efficiency** - Enabling Microsoft 365 Insight in your deployment means one less tool engineers have to consult when troubleshooting issues in your IT Infrastructure.



**Manage IT Spend** - Ensure you're dedicating the correct portion of your IT budget to productivity applications and license utilization levels are in proportion with the size of your organization.



**Improve SLAs** - Allow the NOC team to isolate problems faster and properly route issues to the correct personnel, reducing MTTR and improving service levels provided to your end users.



"The value we get from Microsoft 365 Insight is tool consolidation, which translates to a time saving for the team and I. I'm no longer limited to using Netreo for network and server health and then a different console to check on Microsoft 365 health. Monitoring, triage, and troubleshooting are just one click away and they're all in a single, integrated Netreo dashboard." - IT Director - Banking & Finance Industry

Visit [netreo.com](https://netreo.com) to learn more

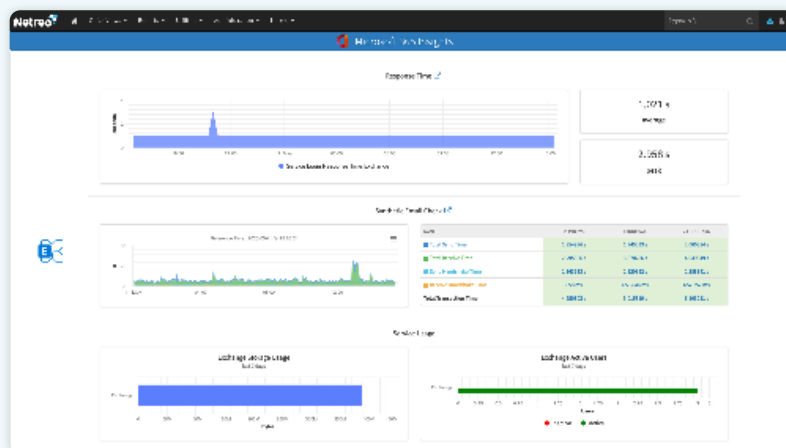
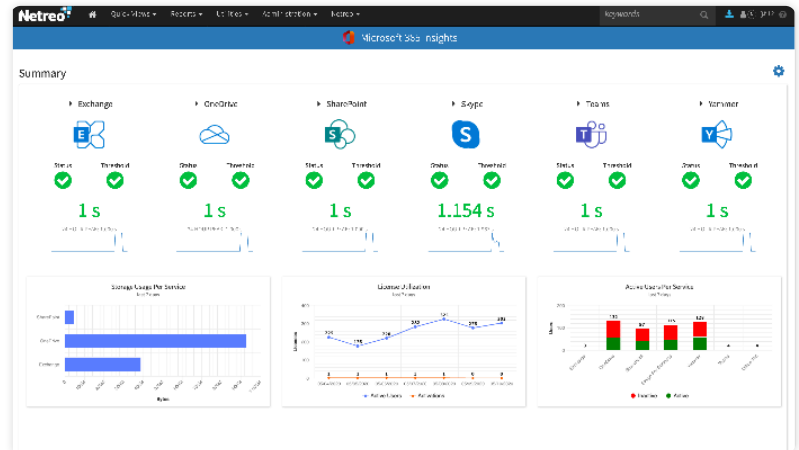
Copyright © Netreo 2023. All Rights Reserved.

# End-to-End Visibility for Microsoft 365

## End-to-End Visibility for Microsoft 365

The data that Microsoft 365 Insight learns from the Microsoft APIs behaves like any other variable tracked by Netreo.

- Complete visibility from a single console
- Detects anomalous behavior
- Fed into the incident management engine for advanced processing
- Included in built-in and ad-hoc reports



## Response Times

A significant pain point for technical personnel who support a Microsoft 365 tenant is visibility into the service as a whole. Microsoft 365 Insight gives you that visibility.

- Automatically logs into Exchange, Sharepoint, OneDrive, Teams, Yammer, and Skype
- Calculates latency, then approximates your users' experience using the productivity suite
- Quickly isolates operational issues to either your local environment or factors outside your control

## Resource Utilization and License Tracking

As an IT Leader you want to know the solutions you're dedicating budget to are realizing the promised benefits. Microsoft 365 Insight helps you answer several questions:

- For storage-space-centric services like OneDrive and Exchange do you have enough to meet the needs of your organization?
- Which services get the most use from your personnel? Are there licensing implications to that usage?
- Are the number of Microsoft 365 activations substantially different from the number of active users?

