

# Eliminate Microsoft 365 Blindspots

Are you among the 43% of IT departments which have deployed Microsoft 365? If yes, you probably are enjoying the benefits of SaaS, but are concerned about mission-critical availability and performance not only from the core of your IT infrastructure, but to your end users as well. Netreo's "Microsoft 365 Insight" module gets you the visibility you need to drive organizational productivity.



## Observe

Synthetic checks to the major services in the Microsoft 365 suite from your user endpoints to help validate digital experience of your user community.



## Analyze

Get insight into Microsoft 365 IT spend. Track usage and consumption for Exchange Online, Sharepoint, OneDrive, Teams, Yammer, and Skype.



## Act

Based on observations and analysis, Powershell scripts can be executed against your Microsoft 365 tenant to remediate issues that may be detected.

## What is Netreo Microsoft 365 Insight?

Netreo's "Microsoft 365 Insight" module gives your IT organization complete visibility into the Microsoft productivity suite. Get geographically-distributed response times to each of the services, execute synthetic checks against the services, and obtain views into Microsoft 365 license utilization.



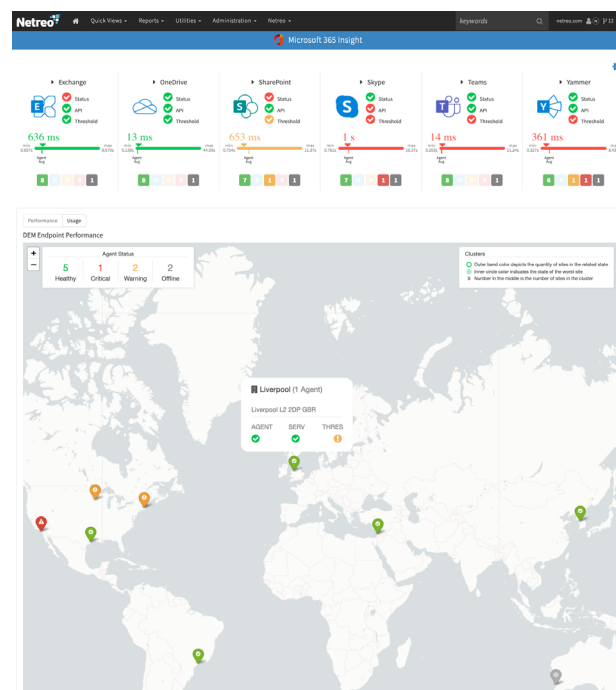
**Drive Efficiency** - Adding Microsoft 365 Insight to your Netreo deployment means one less tool engineers have to consult when troubleshooting issues in your IT Infrastructure.



**Manage IT Spend** - Ensure you're dedicating the correct portion of your IT budget to productivity applications and license utilization levels are commensurate with the size of your organization.



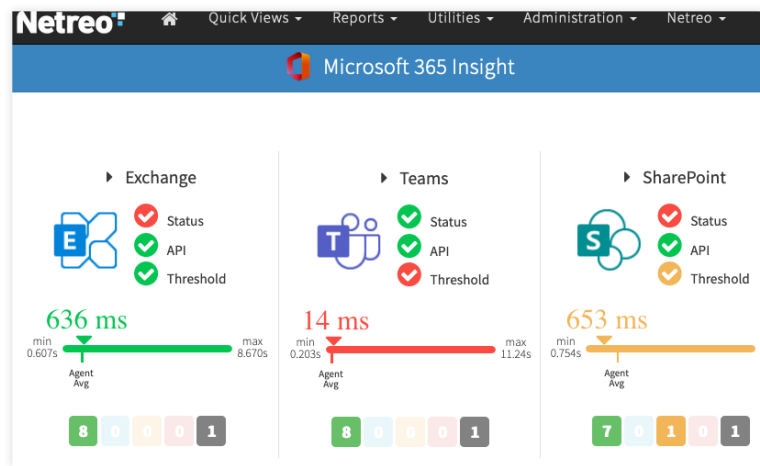
**Improve SLAs** - Allow the NOC team to isolate problems faster and properly route issues to the correct personnel, which will reduce MTTR and improve the service levels provided to your end users.



*"The value big we get from the Microsoft 365 Insight Add-on is tool consolidation, which translates to a time savings for the team and I. I'm no longer limited to using just Netreo for network and server health and then a different console to check on Office 365 health. Monitoring, triage, and troubleshooting are just one click away and they're all in a single, integrated dashboard."*

**- IT Director - Banking and Finance Industry**

# End-to-End Visibility for Microsoft 365



## Multi-perspective Insight

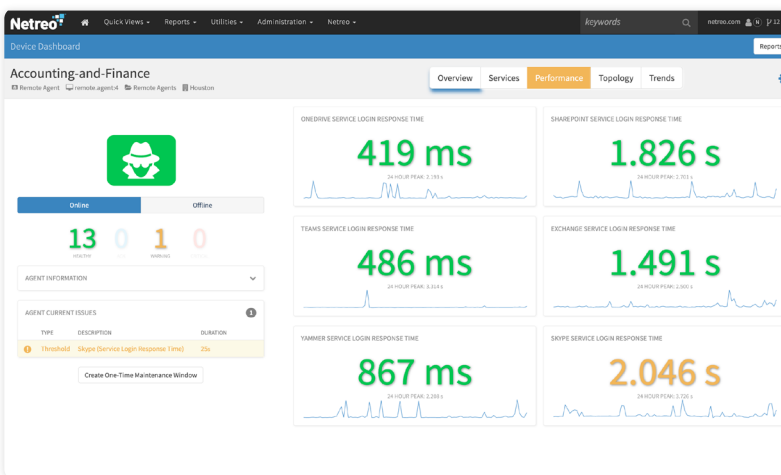
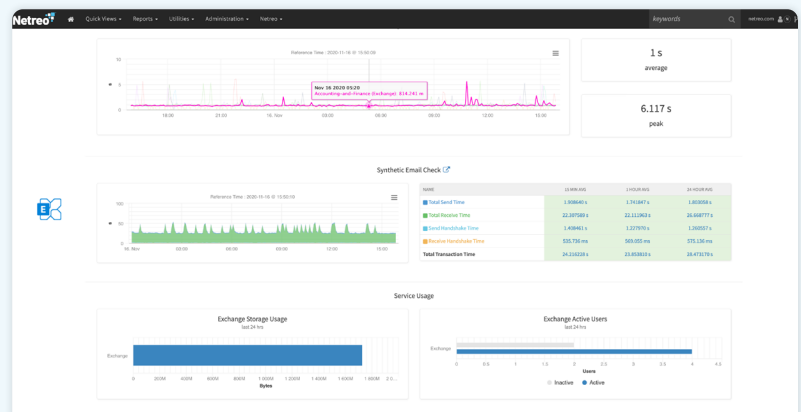
A significant pain point for technical personnel who support a Microsoft 365 tenant is visibility into the service as a whole. Microsoft 365 Insight gives you that visibility.

- Automatically logs into Exchange, Sharepoint, OneDrive, Teams, Yammer, and Skype.
- Calculates latency, then approximates your users' experience using the productivity suite.
- Quickly isolates operational issues to either your local environment or factors outside your control.

## Resource Utilization

As an IT Leader you want to know the solutions you're dedicating budget to are realizing the promised benefits. Microsoft 365 Insight helps you answer several questions:

- For Exchange, Sharepoint, and OneDrive - do you have enough storage to meet your needs?
- Which services get the most use? What are the licensing implications to that usage?
- Are the number of Microsoft 365 users in line with your organizational expectations?



## Digital Experience Metrics

Working from home is now the norm. It is imperative to measure your remote personnel's digital experience into critical IT resources.

- Measure digital experience via a low footprint agent meant for a personal workstation.
- Detects anomalous behavior.
- Included in built-in and ad-hoc reports.