

Complete Azure Resource Visibility

Netreo enhances management of Microsoft Azure for IT professionals by providing deep and immediate insight into the performance and availability of their Azure cloud systems and resources. Optimize cloud costs and intelligently automate issue resolution with features like live dashboards, fully customizable and meaningful alerts, immediate notifications, automated scalability and much more.

Observe

Visibility into all Azure resources from the virtual machine instance level through high level SaaS services means there are no blind spots and business KPIs are constantly monitored.

Analyze

Take advantage of extended Azure metrics and 3 years of historical data to help your IT personnel glean valuable insights into your entire Azure deployment.

Act

Contains a full suite of UI-driven and no-code tools to automate your environment for auto-scaling resources, self-healing actions and recovery procedures, and other tasks.

What is Netreo Azure Monitoring?

An advanced solution for cloud monitoring and automation of virtual machine instances, services, applications, and other resources deployed on the Azure cloud platform.

Who Benefits?



IT Leadership - Netreo offers IT leaders the opportunity to get deep visibility into their Azure deployments and make sure utilization of its services are realizing their planned cost control benefits.



IT Engineering - Drive efficiency among IT engineering teams with Netreo. No need to bounce between the Azure admin console and other solutions. Netreo offers additional monitoring capabilities, templateable profiles, and seamless integrations to ITSM and other 3rd party tools.



IT Operations - Complete visibility helps your IT Operations team route tickets to the proper engineering team the first time around, which reduces MTTR and increases end-user and customer satisfaction.



"Netreo allows us to move extremely fast with confidence. If anything goes wrong, we'll know it before our customers even notice! It's a must-have for any Azure system."

JOEL KARR

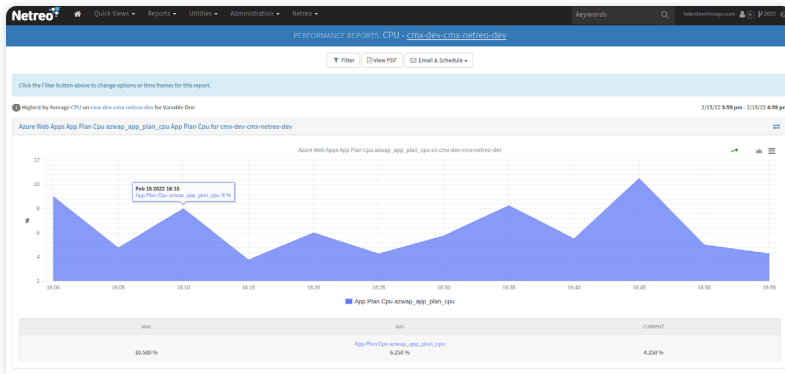
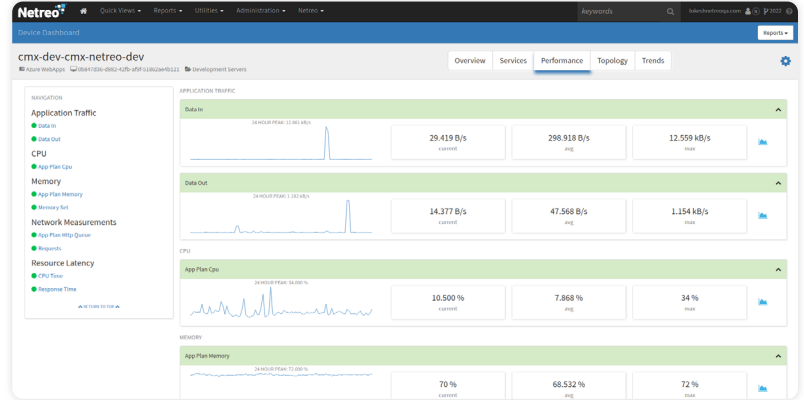
VP of Engineering, Stratus Intelligence

The Cloud Visibility You Need When You Need It

Uplevel Your Azure Monitoring

Netreo enhances the Azure tools provided by Microsoft so they're useful to your entire IT organization.

- Generate metric dashboards that provide 3 years of historical data.
- Dynamic service discovery and auto-configuration to make the process of monitoring new resources easier.
- Clear, consistent, and easy-to-predict licensing costs.



Alerting and Reporting Capabilities

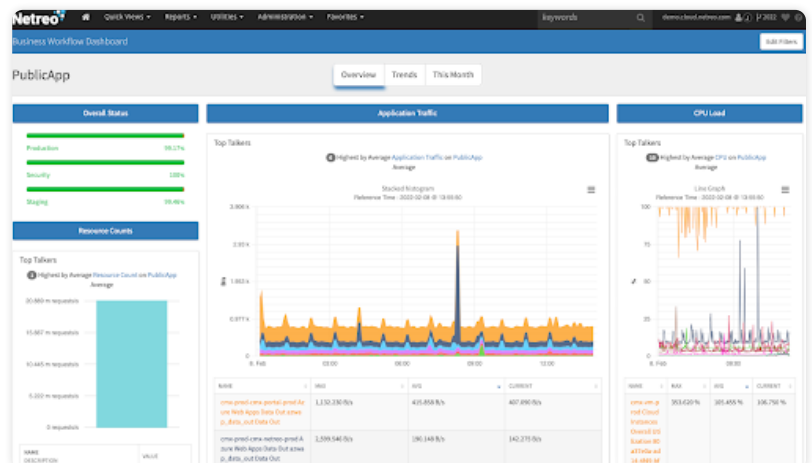
A constant challenge with regard to IT monitoring is alerting and reporting. Netreo improves upon Azure in several ways:

- Seamlessly rolls alerts into operations dashboards, maps and NOC views.
- Integrates metrics and KPIs into automatic reports with minimal administration.

Seamless Hybrid Monitoring

Netreo is the optimal monitoring solution for the entire spectrum of IT organizations. Delivering end-to-end visibility from a single console, Netreo provides detailed metrics and actionable insights into mission-critical applications and resources regardless of where they reside - multi-cloud environments, public and private clouds, on-premises and hybrid infrastructures.

- See all environments together, no matter where the resources are located: FaaS, SaaS, IaaS and PaaS.
- Full visibility into all cloud-hosted resources, functions and capabilities.



Netreo vs Native Azure Monitoring

	Native Azure Monitoring	Netreo
Overview	Azure basic monitoring available via Azure Portal	Netreo extends Azure with: <ul style="list-style-type: none"> - Additional monitoring capabilities - Self-healing automation and auto-scaling - 5-min setup time with preconfigured metrics and alerts - Advanced reporting features - Unlimited integrations to ITSM and other 3rd party tools - Templatable profiles - Ideal for MSP's, CSP's & DevOps
Overall		
Historical dashboards	✗	✓
Configuration templates	✗	✓
Fast and easy setup	✗	✓
Maintenance windows	✗	✓
Pricing	Based on data consumption volume, near-impossible to predict	Based on the number of resources, clear and stable
Dashboards & Insights		
Metrics	Basic	Extended
Data retention	Metrics: 30 days, Activity log: 90 days	3 Years
Metric aggregation	✓	✓
Customizations	✓	✓
Alerting		
Alerts on logs	✓	✓
3rd party integrations	4	Unlimited with flexible webhooks
Automation		
Self-healing automation	Basic, via Azure Automation runbooks; Powershell scripts	Extended, UI-driven, no programming required
Auto-scaling	Basic, programming required	Advanced, UI-driven, no programming required
Reporting		
Ad hoc, export to Excel	limited	✓
Automated delivery	✗	✓
Uptime statistics	✗	✓
Executive summary	✗	✓
Customizations	✗	✓
DevOps Features		
Automated stability	Basic, programming required	Advanced, UI-driven, no programming required
3rd party integrations	Limited, programming required	✓
Enterprise Features		
Role-based security	✓	✓
Data retention	Metrics: 30 days, Activity log: 90 days	3 year
Prod vs. Dev separation	✓	✓
Additional Capabilities		
Automated lifecycle management	✗	✓
Alert deluge management	✗	✓
AWS & other cloud monitoring	✗	✓
Private data center & complete IT infrastructure management	✗	✓